

# Par Z120 RGBW



## Light Efficiency:

11 Lumen/Watt

## Dominant Wavelength:

453 nm

## Output:

1067 lm

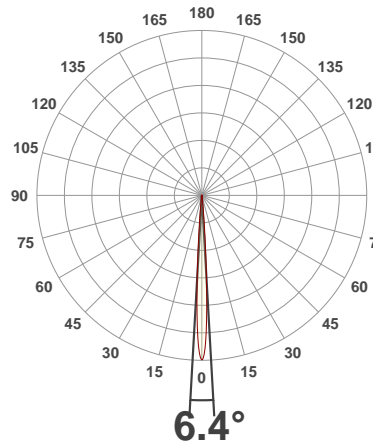
## Power:

93.1 W

## Peak:

78081 cd

## Beam Angle



Test:

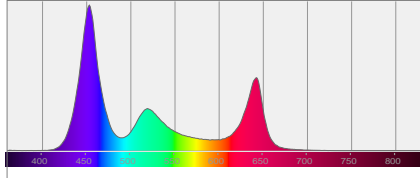
7deg Full On

Date:

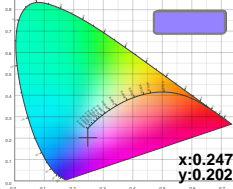
8/17/2018

Note:

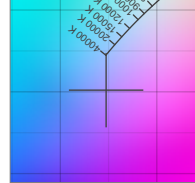
## Spectral Distribution



## Color Coordinates



## Zoom Color Point



Distance (meter)

1

Distance (feet)

3.3

3

9.8

5

16.4

7

22.9

10

32.8

Lux\*

6.4°

Foot Candles\*

\*measured at  
center of beam

77890 lx

7236 fcd

8654 lx

804 fcd

3116 lx

289 fcd

4868 lx

148 fcd

3116 lx

72 fcd

Beam center

Beam Width (meter)

0.1

Beam Width (feet)

0.4

0.3

1.1

0.6

1.8

0.8

2.6

1.1

3.7

Beam Angle 50%	Field Angle 10%	Cutoff Angle 2,5%	Intensity Ratio in 120° Cone	Intensity Ratio in 90° Cone
6.4°	11.3°	14.3°	99.9%	99.8%

## Beam Intensities from 1-20m

m	1	2	3	4	5	6	7	8	9	10	11	12	13	14	15	16	17	18	19	20
ft	3.3	6.6	9.8	13.1	16.4	19.7	23	26.2	29.5	32.8	36.1	39.4	42.7	45.9	49.2	52.5	55.8	59.1	62.3	65.6
lx	77890	19473	8654	4868	3116	2164	1590	1217	962	779	644	541	461	397	346	304	270	240	216	195
fcd	7236.2	1809.1	804	452.3	289.4	201	147.7	113.1	89.3	72.4	59.8	50.3	42.8	36.9	32.2	28.3	25	22.3	20	18.1